

See discussions, stats, and author profiles for this publication at: <https://www.researchgate.net/publication/341911737>

Winter survival and cause-specific mortality of white-tailed deer in northern Minnesota: An update

Technical Report · January 2020

CITATIONS

0

READS

97

3 authors, including:



William Severud

University of Minnesota Twin Cities

47 PUBLICATIONS 403 CITATIONS

SEE PROFILE

Some of the authors of this publication are also working on these related projects:



Beaver foraging ecology [View project](#)



Informing Winter Habitat Management Prescriptions and Population Vital Rate Estimates for White-tailed Deer in Northcentral and Northeastern Minnesota [View project](#)



WINTER SURVIVAL AND CAUSE-SPECIFIC MORTALITY OF WHITE-TAILED DEER IN NORTHERN MINNESOTA: AN UPDATE

Glenn D. DelGiudice, Bradley D. Smith,¹ and William J. Severud¹

SUMMARY OF FINDINGS

Ongoing studies that examine the influences of environmental, intrinsic, and demographic factors on survival and cause-specific mortality rates of white-tailed deer (*Odocoileus virginianus*) have been critical to enhancing our understanding of population performance and to improving management. A recent evaluation report from the Office of the Legislative Auditor recommended that the "...DNR should conduct field research to collect and utilize more information about Minnesota's deer... and inform the department's vital rate estimates of deer births and deaths, and better reflect deer population dynamics" to improve our understanding of demographics and habitat requirements. Using cutting-edge global positioning system (GPS) collars, and remote sensing and geographic information system (GIS) technologies, we recently launched a study that will inform a level of understanding of habitat requirements and drivers of population performance required by managers to prescribe forest manipulations that best support population goals. Herein, our objectives are to compare winter survival rates and cause-specific mortality (and influential factors) of adult (≥ 1.5 yr) female deer residing on study sites in northcentral (Inguadona Lake) and northeastern (Elephant Lake) Minnesota. We predicted that survival, percent winter mortality, and the impact of wolf (*Canis lupus*) predation would be influenced by winter severity in a way that is consistent with our understanding of this relationship garnered from a previous long-term (1991–2005) study in northcentral Minnesota. The *natural* mortality rate during the first winter (2017–2018) was high; 6 of 19 (31.6%) GPS-collared adult female deer (3 at each site) were all killed by wolves during 10 April to 31 May 2018. Overall survival had decreased to 0.68 (95% confidence interval [CI] 0.50–0.93) by then. But this was a *pilot year*, so the survival estimate was limited by small sample sizes (10 collared deer per site) and represented only the late–winter season (12 March to 28 May 2018) due to delayed capture operations. However, during the second winter (2018–2019), with more than twice the sample size ($n = 51$), the *natural* mortality rate was also high (36.7%); 17 of 49 deer were preyed upon by wolves and 1 by bobcat (*Felis rufus*) between 1 November 2018 and 20 April 2019 (cutoff for analysis for this annual report). Eight mortalities occurred at Inguadona Lake and 9 at Elephant Lake. The overall survival rate was 0.70 (95% CI = 0.57–0.86). The wolf predation rates during the 2 winters (31.6% and 34.7%) notably exceeded what we had expected based on the documented relationship of the previous long-term study. Typically, adult female deer enter winter in better physical condition than fawns and adult males, and thus have the highest probability of surviving winter. Our findings at least suggest that during both winters overall mortality rates at the population level, across sex and age classes, were likely higher than indicated by our adult female data. Ongoing federal protection of wolves in

¹ University of Minnesota, Department of Fisheries, Wildlife, and Conservation Biology, 2003 Upper Buford Circle, Ste. 135, St. Paul, MN 55108

Minnesota limits Minnesota Department of Natural Resources (MNDNR) management options and has at least contributed to the estimated wolf population almost doubling from winter 1988–1989 (1,521 wolves) to the present (~2,900 wolves). Caution may be warranted in interpreting our preliminary findings, but they highlight the need for multi-year continuation of this study to better understand whether deer-habitat-wolf predation relationships have been changing since completion of the MNDNR’s previous long-term study, a potentially significant consideration relative to implementation of the state’s recently developed deer management plan.

INTRODUCTION

Studies that have examined the influences of extrinsic (e.g., habitat, predation, and human activities), intrinsic (e.g., age, sex, condition), and demographic (e.g., density) factors on survival and cause-specific mortality rates have enhanced our understanding of the dynamics of white-tailed deer (*Odocoileus virginianus*) and other ungulate populations in northern Minnesota and elsewhere (Nelson and Mech 1986a,b; Fuller 1990; Bartmann et al. 1992; DelGiudice 1998; Gaillard et al. 2000; DelGiudice 2002, 2006). A long-term (1991–2005) study of female deer, the reproductive component of populations, reported that the relative risk of mortality was strongly related to the severity of winter conditions in northcentral Minnesota (DelGiudice et al. 2002, 2006). Indeed, the risk of death increased as winters progressed, and by the end of winter was at least 10 times greater during the most severe winter (1995–1996) compared to the mildest winter (1990–1991). That study also documented that the relative risk of death of female deer by natural causes was consistently greater than by all other causes of mortality (e.g., hunting), and that wolf (*Canis lupus*) predation, directly related to snow depth, was the primary cause of mortality. Furthermore, the risk of mortality by wolves increases sharply for adults after 6 years of age.

The Office of the Legislative Auditor (OLA) recently issued an evaluation report of the Minnesota Department of Natural Resources’ (MNDNR) management of the state’s deer population (OLA 2016). This document focused on improving population estimates but emphasized that improved habitat management should be a key component of a new statewide deer management plan to establish and meet population goals. The OLA report recommends that the “...DNR should conduct field research to collect and utilize more information about Minnesota’s deer... and inform the department’s vital rate estimates of deer births and deaths, and better reflect deer population dynamics” to improve our understanding of demographics and habitat requirements. Partially in response to the OLA report, we recently launched a study using cutting-edge global positioning system (GPS)-collar, remote sensing, and geographic information system (GIS) technologies that will provide a level of understanding of habitat requirements and drivers of population performance (survival and reproduction) required by managers to prescribe forest manipulations that best support population goals (DelGiudice et al. 2017, 2019).

Fieldwork for this study was initiated during winter 2017–2018. In addition to an overall objective of establishing the technical feasibility of making fine-scale measurements of habitat use by deer at the forest stand level (see Smith et al. 2019), we monitored winter survival and cause-specific mortality as a means of assessing habitat quality (DelGiudice et al. 1989a,b) and to update input for state modeling of northern deer populations. We predicted that the influence of winter severity on crude winter mortality and the wolf predation rate of adult female deer would be consistent with findings from our previous long-term study (DelGiudice et al. 2002, 2006).

OBJECTIVES

1. To compare winter survival rates of adult female deer residing on the Inguadona Lake and Elephant Lake sites, located in northcentral and northeastern Minnesota, respectively, where there are differences in winter severity, habitat composition, and deer density; and
2. To determine specific causes of mortality and contributing factors.

STUDY AREA

As discussed above and in a companion research summary in this issue (Smith et al. 2019), the study included 2 deer winter range sites, Inguadona Lake (46 km²) in northcentral and Elephant Lake (76 km²) in northeastern Minnesota. These sites allow natural comparisons of potential influences of differences in winter severity, habitat composition, and deer density on habitat use and requirements and associated vital estimates. D'Angelo and Giudice (2015) reported pre-fawning deer densities of 7–9 and 3–5 deer/km² in the vicinity of the Inguadona Lake and Elephant Lake sites, respectively. The MNDNR calculates a winter severity index (WSI) throughout the state by accumulating 1 point for each day with an ambient temperature $\leq -17.7^{\circ}$ C and an additional point for each day when snow depth is ≥ 38 cm during 1 November–31 May. Generally, winters with maximum WSI values (by 31 May) < 100 , 100–180, and > 180 are assessed as mild, moderately severe, and severe, respectively, relative to impacts on deer survival; however, multiple factors may influence this interpretation annually and geographically (DelGiudice et al. 2006). Maximum WSI at Inguadona Lake at the end of winter was 60 and 113 during 2017–2018 and 2018–2019, respectively. The maximum WSI values at Elephant Lake were 130 and 121. Additional details addressing site boundaries, location, topography, forest composition, long-term weather, and wolf and black bear (*Ursus americanus*) densities are provided in Smith et al. (2019).

METHODS

During 10–11 March 2018, 19 adult (≥ 1.5 yr old), female white-tailed deer were captured by net-gunning from helicopter (Hells Canyon Helicopters, Clarkston, Washington), 9 and 10 on the Inguadona Lake and Elephant Lake sites, respectively. A tenth deer was captured on 25 February by Clover trap at Inguadona (Clover 1956). Except for this deer (which was immobilized with xylazine and ketamine, and reversed with yohimbine), all deer were physically restrained for handling (Smith et al. 2019). Similarly, 20 adult female deer were captured on each site by net-gunning from helicopter (Quicksilver Air, Inc., Fairbanks, Alaska) during 5–8 February 2019 and handled following the same protocol. All deer were fitted with a Globalstar Recon GPS collar (Model IGW-4660-4; Telonics, Inc., Mesa, Arizona). We programmed all collars to collect 1 location-fix every 2 hours during December–June and 1 location-fix every 4 hours during July–November. The collar's mortality sensor relies on a 3-axis accelerometer. The unit samples this accelerometer every second. "Active" is recorded when the reading of any of the 3 axes changes by more than 0.3 g (gravitational force) since the last active second. Less than 5 accumulated seconds of activity during the previous 8-hours causes the unit to detect mortality, which triggers the collar to send a mortality notification through the Globalstar satellites, followed by sending an email to our team. This launches our field investigation. This also increases the very high frequency (VHF) pulse rate to notify researchers in the field. Our field investigations included a thorough search for site and carcass evidence to determine the specific cause of mortality. When available, we collected a mandible (to extract a fourth incisor) and femur (or other long bone as necessary) to age the deer to the year and assess body condition (Gilbert 1966, Mech and DelGiudice 1985). We conservatively assigned ultimate cause of death as "capture-related" when the mortality occurred within 7 days of capture,

regardless of the proximate cause (e.g., wolf-kill; DelGiudice et al. 2002, 2006) or handling method (i.e., physically or chemically immobilized).

We calculated Kaplan-Meier survival estimates using the R package *KMsurv* (R Core Team 2017). We examined relationships between the WSI and percent winter mortality by simple linear regression analyses in Excel (Version 14.0.7153.5000, Microsoft Corporation 2010).

RESULTS AND DISCUSSION

Overall survival of our GPS-collared adult female deer decreased markedly to 0.68 (95% confidence interval [CI] 0.50–0.93) and 0.70 (95% CI 0.57–0.86) during winters 2017–2018 and 2018–2019, respectively, and was consistently similar at Inguadona Lake and Elephant Lake (Figure 1). The overall crude natural mortality rate (reported for consistency with the estimate from the previous study, but not to replace use of the aforementioned survival rates) was 31.6% (6 of 19 deer) and 36.7% (18 of 49 deer) during winters 2017–2018 and 2018–2019, respectively (Figure 2). These rates exclude 1 capture-related mortality during each season and an unrecovered hunter-harvest deer during the second year. Wolf predation rates were 31.6% (6 of 19) and 34.7% (17 of 49) during the 2 winters (Figure 2). Wolf predation accounted for all of the natural mortality during winter 2017–2018 and all but 1 of the mortalities during 2018–2019, which was a deer killed by a bobcat (*Felis rufus*). Many of the wolf-killed deer were in poor condition as indicated by a mean marrow fat content of 68.9% (± 9.1 [SE], range = 3–91%, $n = 12$; Watkins et al. 1991).

Given the low to moderate maximum WSI values during winters 2017–2018 and 2018–2019 at Inguadona (60 and 113) and Elephant Lake (130 and 121), reflecting mild to moderately severe conditions, these female mortality rates, overall and due to wolf predation specifically, were extraordinarily high (Figure 2). Winter wolf predation on northern deer is directly related to snow depth. Deepening snow increasingly impedes deer mobility and escape (deer have a heavier weight-load-on-track than wolves) and steadily compromises their energy balance and endurance (Moen 1976, Nelson and Mech 1986b, DelGiudice 1998, DelGiudice et al. 2002). Consequently, most winter mortalities, both in our previous long-term and present studies, occurred during March–May, when snow cover is deepest and body condition is poorest.

The preponderance of evidence in this study suggests that poor condition was a noteworthy contributing factor to the high mortality rates by wolf predation. Given that winter conditions were not particularly severe at either site in either year, as indicated by maximum WSI values, this prompts consideration of the role of winter habitat deficiencies compromising the ability of deer to adequately fulfill their biological requirements and avoid wolf predation as the season progressed. Indeed, it is additionally noteworthy that winter survival and wolf predation rates were similar on both sites during both winters. Increasing concerns about the limited quantity and quality of habitat (e.g., dense conifer cover) on deer winter range in northern Minnesota, in large part, prompted the need for the present study (T. Rusch, L. Petersen, and P. Backman, MNDNR, Section of Wildlife, personal communication), as did OLA's evaluation report strongly recommending continued deer research that enhances the MNDNR's understanding of vital estimates and associated population dynamics for improved management (OLA 2016). Typically, adult female deer enter winter in the best physical condition (i.e., most replete fat reserves), and thus have the lowest hazard risk or highest probability of surviving winter compared to fawns and adult males (Mautz 1984, Robbins 1993, DelGiudice et al. 2002). This at least suggests that overall winter mortality rates during these 2 years could have been even higher than indicated by our preliminary adult female data. Ongoing federal protection of wolves in Minnesota limits the MNDNR's management options, and consequently, has at least

contributed to the estimated population almost doubling from winter 1988–1989 (1,521 wolves), just as the previous deer study was initiated (winter 1990–1991), to the present (~2,900 wolves, Erb and DonCarlos 2009, Erb et al. 2017). Caution may be warranted in interpreting our preliminary findings, but the accumulating evidence critically highlights the need for multi-year continuation of this study to better understand whether these complex deer-habitat-wolf predation relationships have been changing since completion of the previous long-term study (DelGiudice et al. 2002, 2006, 2007, 2013a,b).

ACKNOWLEDGMENTS

We appreciate the dedicated efforts of B. R. Matykiewicz, B. L. Wagner, M. Pike, and C. Marvet as field biology technicians whose duties included capturing and handling deer, collecting snow-urine samples for nutritional assessments, and gathering vegetation data for habitat classification and inventories. We thank P. Backman for her support with study site selection, deer mortality investigations, and overall logistics, and for her helpful knowledge of the Elephant Lake study site. We also appreciate the effort and technical skills of C. A. Humpal in the laboratory, analyzing snow-urine samples and deer bone marrow samples. Finally, we acknowledge the United States Forest Service LaCroix and Deer River Ranger Districts for providing housing during the winter field seasons. J. Erb loaned us field equipment as needed. This project is supported by the Minnesota Department of Natural Resources Section of Wildlife and the Wildlife Restoration (Pittman-Robertson) Program. The Minnesota Deer Hunters Association provided supplemental funding to support valuable post-doctoral research assistance.

LITERATURE CITED

- Bartmann, R. M., G. C. White, and L. H. Carpenter. 1992. Compensatory mortality in a Colorado mule deer population. *Wildlife Monographs* 121.
- Clover, M. R. 1956. Single-gate deer trap. *California Fish and Game* 42:199–201.
- D'Angelo, G. J., and J. H. Giudice. 2015. Monitoring population trends of white-tailed deer in Minnesota - 2015. Section of Wildlife, Minnesota Department of Natural Resources, St. Paul, Minnesota, USA.
files.dnr.state.mn.us/wildlife/deer/reports/harvest/popmodel_2015.pdf – 2015-09-09.
- DelGiudice, G. D. 1998. Surplus killing of white-tailed deer by wolves in northcentral Minnesota. *Journal of Mammalogy* 79:227–235.
- DelGiudice, G. D., J. Fieberg, M. R. Riggs, M. Carstensen Powell, and W. Pan. 2006. A long-term age-specific survival analysis of female white-tailed deer. *Journal Wildlife Management* 70: 1556–1568.
- DelGiudice, G. D., J. R. Fieberg, and B. A. Sampson. 2013a. A long-term assessment of the variability in winter use of dense conifer cover by female white-tailed deer. *PLoS ONE* 8(6): e65368. Doi: 10.1371/journal.pone.0065368
- DelGiudice, G. D., M. S. Lenarz, and M. Carstensen Powell. 2007. Age-specific fertility and fecundity in northern free-ranging white-tailed deer: evidence for reproductive senescence? *Journal of Mammalogy* 88:427–435.
- DelGiudice, G. D., L. D. Mech, and U. S. Seal. 1989a. Physiological assessment of deer populations by analysis of urine in snow. *Journal of Wildlife Management* 53:284–291.

- DelGiudice, G. D., L. D. Mech, and U. S. Seal. 1989*b*. Browse diversity and the physiological status of white-tailed deer during winter. *Transactions of the North American Wildlife and Natural Resources Conference* 54:134–145.
- DelGiudice, G. D., A. Norton, J. F. Knight. 2017. Informing winter habitat management prescriptions and population vital rate estimates for white-tailed deer in northcentral and northeastern Minnesota. Phase I research proposal. Minnesota Department of Natural Resources Section of Wildlife, St. Paul, Minnesota, USA.
- DelGiudice, G. D., M. R. Riggs, P. Joly, and W. Pan. 2002. Winter severity, survival and cause-specific mortality of female white-tailed deer in north central Minnesota. *Journal of Wildlife Management* 66:698–717.
- DelGiudice, G. D., B. A. Sampson, and J. H. Giudice. 2013*b*. A long-term assessment of the effect of winter severity on the food habits of white-tailed deer. *Journal of Wildlife Management* 77:1664–1675.
- DelGiudice, G. D., B. D. Smith, and J. Knight. 2019. Informing winter habitat management prescriptions and population vital rate estimates for white-tailed deer in northcentral and northeastern Minnesota. Phase II research proposal. Minnesota Department of Natural Resources Section of Wildlife, St. Paul, Minnesota, USA.
- Erb, J., and M. DonCarlos. 2009. An overview of the legal history and population status of wolves in Minnesota. Pages 49-64 *in* A. P. Wydeven, T. R. Van Deelen, and E. J. Heske, editors. *Recovery of gray wolves in the Great Lakes Region of the United States: an endangered species success story*. Springer. New York, New York, USA.
- Erb, J., C. Humpal, and B. Sampson. 2017. Minnesota wolf population update 2017. Minnesota Department of Natural Resources Section of Wildlife, St. Paul, Minnesota, USA.
- Fuller, T. K. 1990. Dynamics of a declining white-tailed deer population in north central Minnesota. *Wildlife Monographs* 110.
- Gaillard, J. –M., M. Festa-Bianchet, N. G. Yoccoz, A. Loison, and C. Toigo. 2000. Temporal variation in fitness components and population dynamics of large herbivores. *Annual Review of Ecology and Systematics* 31:367–393.
- Gilbert, F. F. 1966. Aging white-tailed deer by annuli in the cementum of the first incisor. *Journal of Wildlife Management* 30:200–202.
- Mautz, W. W. 1978. Nutrition and carrying capacity. Pages 321–348 *in* J. L. Schmidt and D. L. Gilbert, editors. *Big game of North America: ecology and management*. Stackpole Books, Harrisburg, Pennsylvania, USA.
- Mech, L. D., and G. D. DelGiudice. 1985. Limitations of the marrow-fat technique as an indicator of body condition. *Wildlife Society Bulletin* 13:204–206.
- Moen, A. N. 1976. Energy conservation by white-tailed deer in the winter. *Ecology* 57:192–198.
- Nelson, M. E., and L. D. Mech. 1986*a*. Mortality of white-tailed deer in northeastern Minnesota. *Journal of Wildlife Management* 50:691–698.
- Nelson, M. E., and L. D. Mech. 1986*b*. Relationship between snow depth and gray wolf predation on white-tailed deer. *Journal of Wildlife Management* 50:471–474.
- Office of Legislative Auditor (OLA). 2016. Evaluation report, Department of Natural Resources: Deer population management. Program Evaluation Division, St. Paul, Minnesota, USA.

R Core Team. 2017. R: A language and environment for statistical computing. R Foundation for Statistical Computing, Vienna, Austria. URL <https://www.R-project.org/>.

Robbins, C. T. 1993. Wildlife feeding and nutrition. Academic Press, New York, New York, USA.

Smith, B. D., G. D. DelGiudice, and W. J. Severud. 2019. Establishing the feasibility of making fine-scale measurements of habitat use by white-tailed deer in northern Minnesota, winter 2017–2018. *In* L. Cornicelli, M. Carstensen, B. Davis, N. Davros, and M. A. Larson, editors. Summaries of Wildlife Research Findings 2017. Minnesota Department of Natural Resources, St. Paul, Minnesota, USA. *In prep.*

Watkins, B. E., J. H. Witham, D. E. Ullrey, D. J. Watkins, and J. M. Jones. 1991. Body composition and condition evaluation of white-tailed deer fawns. *The Journal of Wildlife Management* 55:39–51.

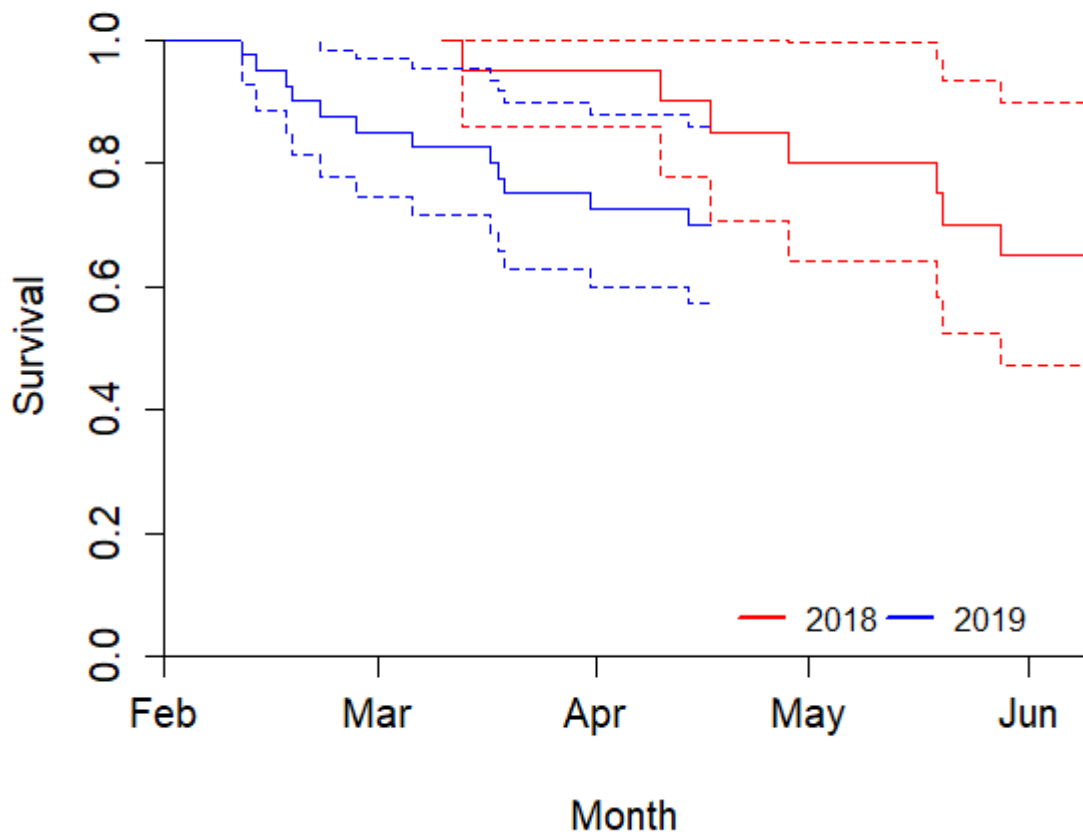


Figure 1. Kaplan-Meier survival curves of adult (≥ 1.5 yr) female white-tailed deer from date of capture, 10–11 March 2018 ($n = 20$) and 5–8 February 2019 ($n = 40$), to 31 May 2018 and 20 April 2019 (cutoff date for analysis included in this report), respectively, at the Inguadona Lake and Elephant Lake study sites (pooled), northcentral and northeastern Minnesota. Dashed lines represent 95% confidence intervals.

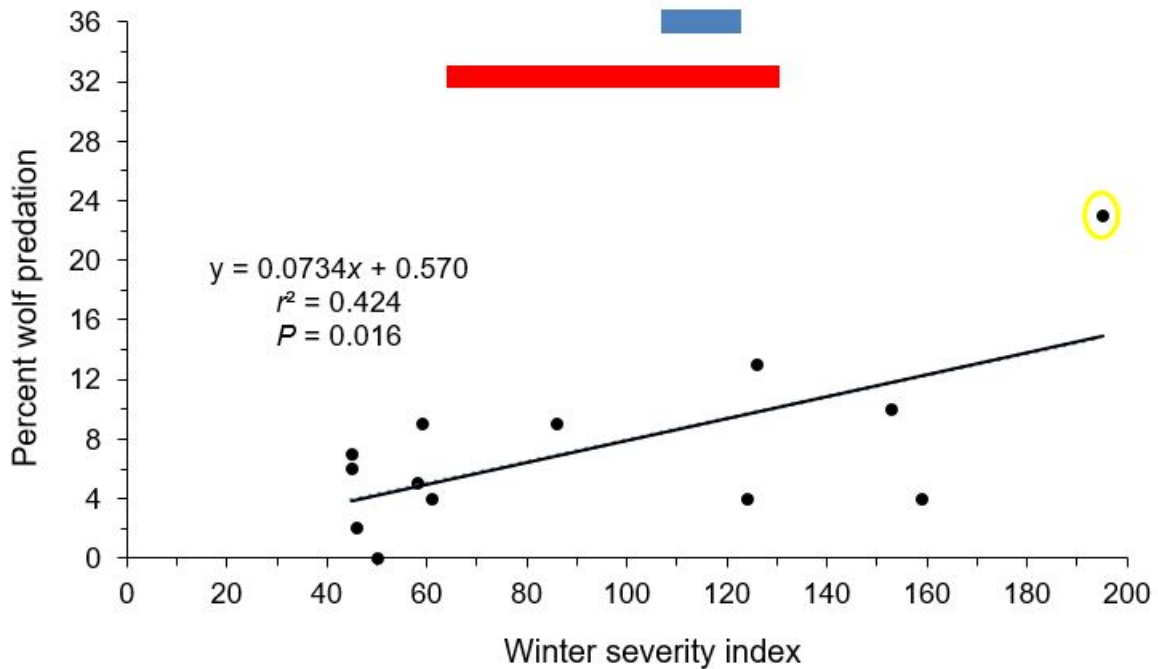
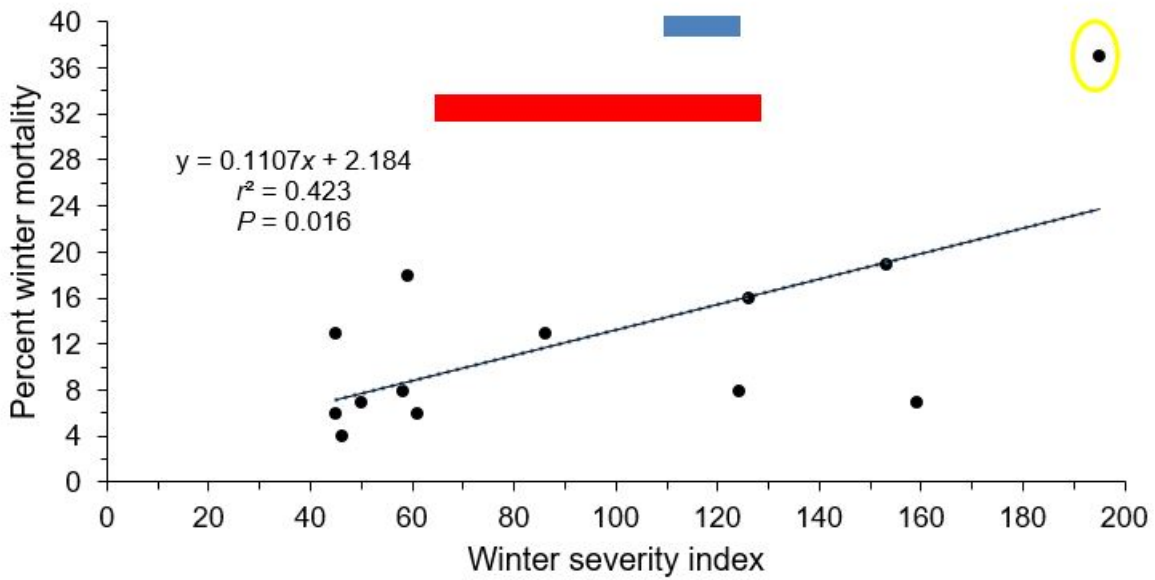


Figure 2. Comparison of crude winter mortality (top) and wolf predation rates (bottom) of adult (≥ 1.5 years) female white-tailed deer at the Inguadona and Elephant Lake sites (pooled) in northern Minnesota during winters 2017–2018 (red) and 2018–2019 (blue) to the long-term relationship of these rates for adult female deer to maximum winter severity index (WSI) in northcentral Minnesota during winters 1990–1991 to 2002–2003 (DeGiudice et al. 2006). The red bars represent deer ($n = 19$) during winter 2017–2018 and the blue bars represent deer ($n = 49$) during winter 2018–2019 and span WSI values for the 2 study sites each year. One

capture-related mortality was excluded during each winter, and 1 unrecovered hunter-harvested deer was excluded from winter 2018-2019. The circled data point represents historically severe winter 1995-1996.